



# THE WIXROYD GROUP

A compact look at components across our three brands, made to solve your unique application challenges.

LINEAR

MECHANICAL

LINKAGES & ROTARY

DESIGN ELEMENTS

ACCESS

WORKHOLDING

NYLON FASTENERS



**Wixroyd**  
AN ESSENTRA COMPANY



**Automotion**  
AN ESSENTRA COMPANY

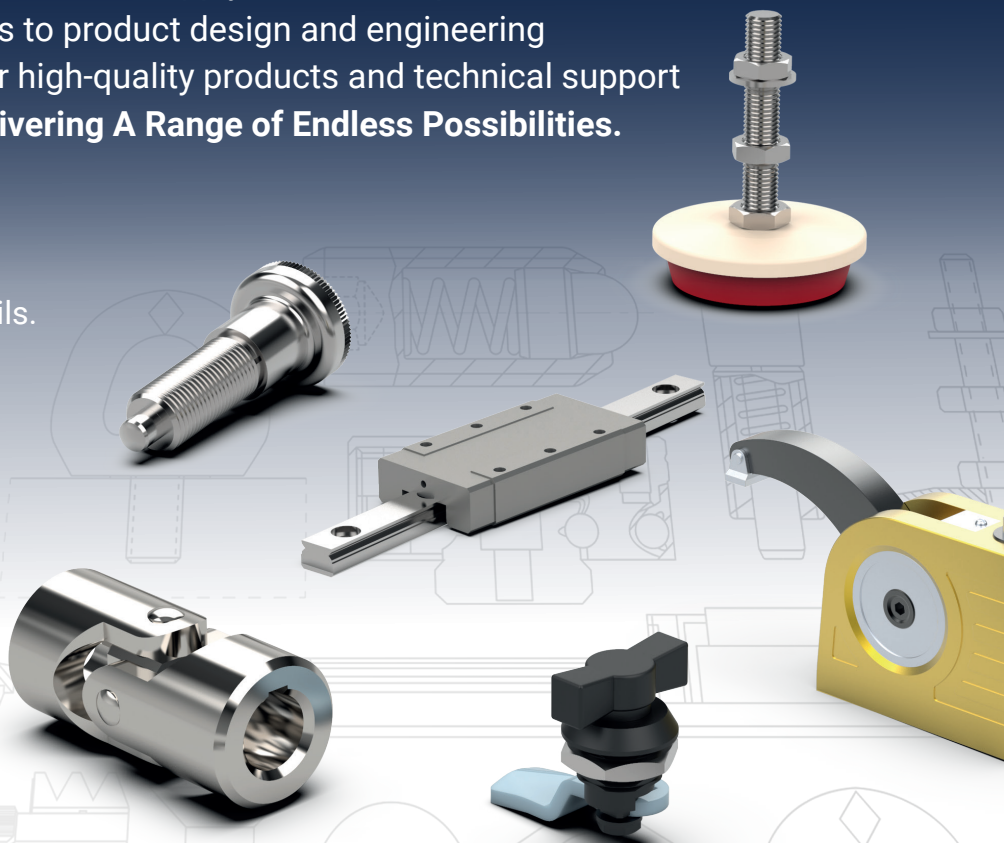


**Teknipart**  
AN ESSENTRA COMPANY

## We are The Wixroyd Group

The Wixroyd Group is made up of three of the **strongest UK brands in the world of industrial components**: Wixroyd, Automotion Components and Teknipart. Together we manufacture and supply innovative specialist components to provide solutions to product design and engineering challenges. With a reputation for high-quality products and technical support for businesses, we focus on **Delivering A Range of Endless Possibilities**.

Follow us on Facebook & LinkedIn  
WixroydGroup or take a look at  
[www.wixroyd.group](http://www.wixroyd.group) for more details.

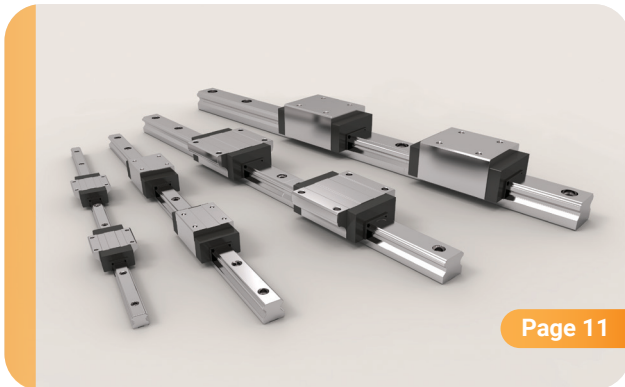


[www.wixroyd.group](http://www.wixroyd.group)  
Follow us @WixroydGroup

# LINEAR COMPONENTS



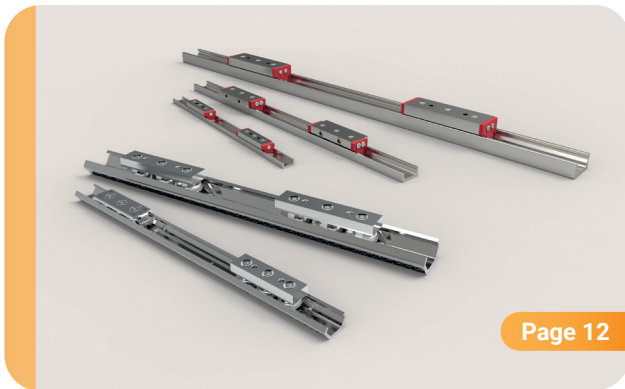
BROWSE ONLINE



Page 11

## LINEAR RAILS

- Hardened steel linear rails
- Miniature stainless linear rails
- Aluminium linear rails
- Needle roller linear rails



Page 12

## COMPACT & X-RAILS

- X-rails in zinc plated steel and AISI 316 stainless
- Easy to install compact rails allowing for parallel misalignment



Page 13

## TELESCOPIC SLIDES

- Fully and partially telescopic heavy duty slides
- Aluminium and stainless telescopic slides
- Drawer slides
- Ultra heavy duty telescopic slides
- Extended stroke telescopic slides



Page 14

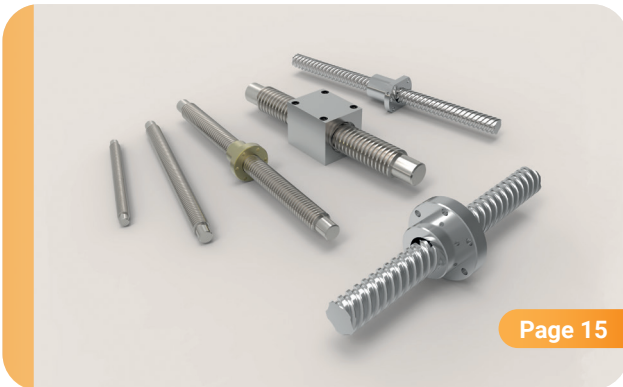
## CURVED RAILS

- Constant radius curved rails
- Variable radius curved rails
- Custom radius and arcs of circle
- Steel, stainless steel, and on request, aluminium

# LINEAR COMPONENTS



BROWSE ONLINE



Page 15

## LEAD & BALL SCREWS

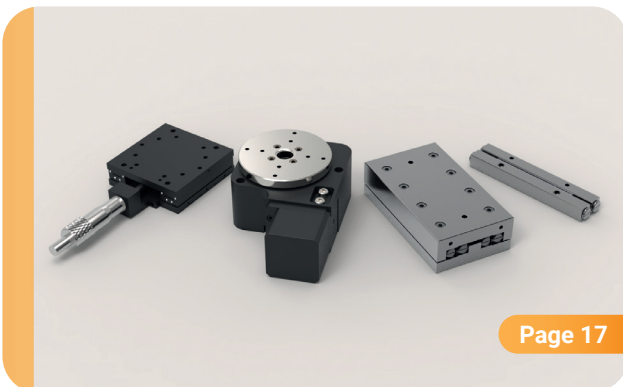
- Trapezoidal lead screws in steel and stainless
- Range of nuts and lead screw accessories
- Rolled thread ball screws
- Miniature rolled ball screws
- Anti-corrosion ball screws



Page 16

## LINEAR SHAFTS & BEARINGS

- Linear shafts bar
- Linear shaft support rails
- Bearing mounts
- Linear ball bushings
- Linear ball bushing carriages



Page 17

## CROSSED ROLLER RAILS & TABLES

- Linear rails sets: needle roller, anti-friction, anti-creep
- Linear tables: ball slide assemblies, precision ball, crossed roller slide, anti-creep



Page 18

## PILLOW BLOCKS & BEARING SUPPORTS

- Bearing supports for lead and ball screws
- Pillow blocks, also known as plummer blocks

# MECHANICAL COMPONENTS



BROWSE ONLINE



Page 19

## SHOULDER SCREWS

- Shoulder screws manufactured in-house
- Specials available on request
- 303, 316 and 416 stainless, titanium, zinc plated steel and blackened steel



Page 20

## CAPTIVE SCREWS

- Captive screws manufactured in-house
- Captive washers and retaining flanges
- Specials available on request
- 303 and 316 stainless, titanium, zinc plated steel and blackened steel



Page 21

## SEALING SCREWS

- Sealing screws manufactured in-house
- Sealing nuts and washers
- Specials available on request
- 303 and 316 stainless



Page 22

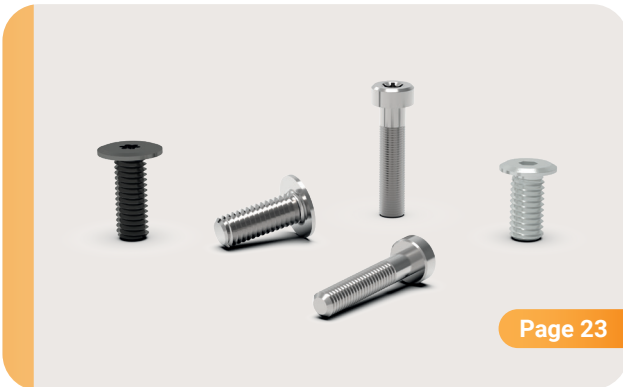
## VENTED SCREWS

- Vented screws manufactured in-house
- Vented shoulder screws
- Vented washers
- Specials available on request
- 304 and 316 stainless

# MECHANICAL COMPONENTS



BROWSE ONLINE



Page 23

## LOW HEAD SCREWS

- Extra low head screws
- Ultra low head screws
- Socket drive and torx drive



Page 24

## PINS & SPACERS

- Dowel pins
- Slotted and coiled spring pins
- Grooved, cotter, clevis and hammer drive pins
- Shaft locking pins
- Hex pillars, spacers and clearance spacers



Page 25

## ANTI-VIBRATION

- Cylinders, buffers and cones
- Feet and mounts
- Bases, pads and impact plates
- Ceiling and acoustic hangers
- Spring mounts

# LINKAGES & ROTARY COMPONENTS



BROWSE ONLINE



Page 26

## CLEVIS JOINTS

- DIN 71 752 clevis joints
- Male clevis joints
- Clevis mating pieces
- Range of clevis pins and clips to suit



Page 27

## ROD ENDS

- Economy rod ends
- K series and E series rod ends
- Rod ends with stud
- Hydraulic rod ends
- Heavy duty rod ends



Page 28

## BALL & SOCKET JOINTS

- DIN 71 802 ball and socket joints
- Axial ball and socket joints
- Lockable ball and socket joints
- Steel, stainless and plastic



Page 29

## UNIVERSAL JOINTS

- Single or double universal joints
- Telescopic universal joints
- Plain bearing universal joints
- Needle roller bearing universal joints
- Bellows



## SPRING PLUNGERS

- Smooth body push fit spring plungers
- Expander fit spring plungers
- Threaded with ball or pin
- Imperial spring plungers
- Spring bodies



## INDEX PLUNGERS

- Pull ring index plungers
- Pull, t-handle or lever grip index plungers
- Threaded or flange mounting options
- Locking and non-locking index plungers



## BALL LOCK PINS

- Plastic handle ball lock pins
- T and L handle ball lock pins
- Mushroom, contoured, and safety handle ball lock pins
- Aviation pip pins
- Detent pins



## GRIPS & HANDLES

- Palm and star grips
- Knurled knobs
- Ball and mushroom knobs
- Pull handles: ring pulls, trunk handles, hatch pulls, ledge pulls and heavy duty
- Clamping levers





Page 34

## HANDWHEELS

- 2 or 3 spoke handwheels
- Disc type handwheels
- With or without rotating handle
- Pre-bored or pilot-bored handwheels



Page 35

## LEVELLING FEET

- Steel, stainless and plastic base levelling feet
- Articulating levelling feet
- Fixed levelling feet
- Mini levelling feet
- Hygienic levelling feet



Page 36

## LOCATING, POSITIONING & GRIPPING

- Thrust and tipped thrust screws
- Self-aligning pads
- Locating, side thrust, seating and rest pins
- Grippers and rest pads
- Sensing elements



Page 37

## LIFTING RINGS & QUICK LIFT PINS

- Male and female eye bolts to DIN 580 and DIN 582
- Single, double, triple swivel lifting rings
- Quick release ball lift pins
- Quick release threaded lift pins
- Fall protection eye bolts

# ACCESS COMPONENTS



BROWSE ONLINE



Page 38

## LOCKS & LATCHES

- Cam latches and locks
- Compression latches
- T and L handle latches
- Lever latches



Page 39

## HINGES & DAMPERS

- Hinges
- Friction hinges
- Torque and positioning hinges
- Rotary and torque dampers
- Disk dampers



Page 40

## STAYS

- Soft down stays
- Spring loaded stays
- Lid stays
- Doors stays



BROWSE ONLINE



Page 41

## FIXING ELEMENTS

- T-nuts and t-bolts
- Coolant nozzles
- Swing bolts
- Set collars
- Quick, rapid assembly and slip-on nuts



Page 42

## ONE TOUCH FASTENERS

- Ball locking
- Ball clamping
- Magnetic
- Pull clamping
- Sliding clamps



Page 43-44

## MANUAL & TOGGLE CLAMPING

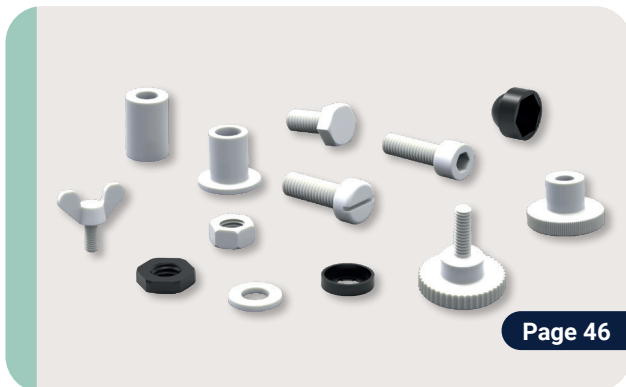
- Low profile
- Adjustable clamps
- Heavy-duty
- Chain, bore and shaft clamping
- Toggle clamps



Page 45

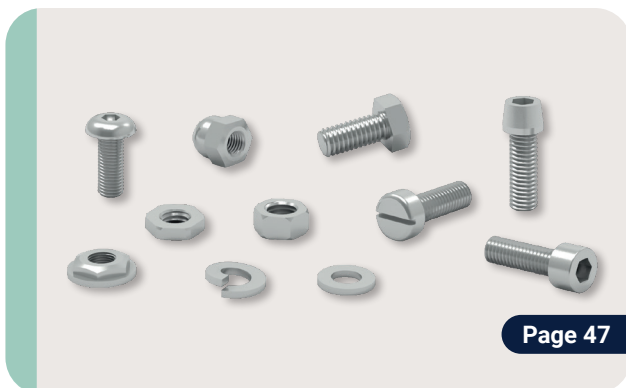
## HAND TOOLS

- Hex keys and wrenches
- Chamfering tools
- Spanners and hook spanners
- Mallets and hammers
- Chip hooks



## NYLON FASTENERS

- Nylon screws
- Nylon washers
- Nylon nuts
- Nylon spacers
- Nylon thumb screws



## ALUMINIUM & TITANIUM FASTENERS

- Aluminium fasteners
- Aluminium nuts and washers
- Titanium fasteners
- Titanium nuts and washers



## THREADED INSERTS

- Thinwall threaded inserts
- Heavy duty threaded inserts
- Extra heavy duty threaded inserts
- Miniature threaded inserts
- Solid threaded inserts

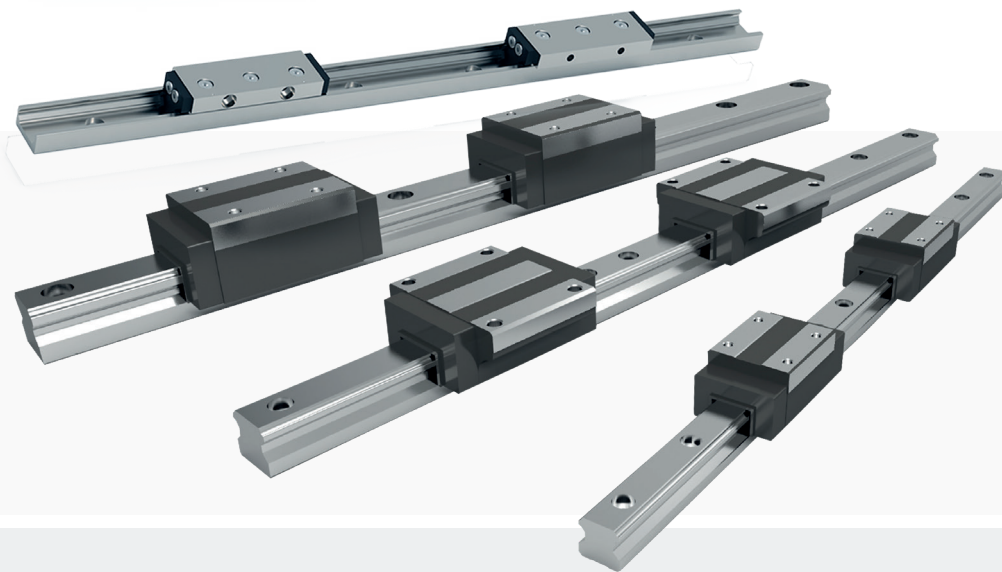


TO VIEW  
**ONLINE**

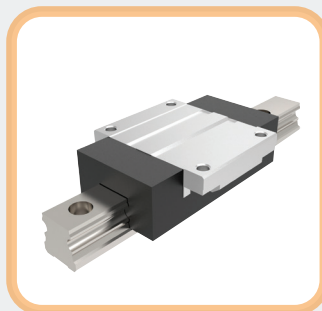
# LINEAR RAILS

A linear rail is a system which facilitates linear movement and supporting of the load of a piece of equipment, either vertically or horizontally. As specialists in linear motion systems, we offer you a choice of materials and sizes. Whether your application requires lightweight aluminium rails for aviation purposes or stainless steel components for resistance against water and corrosive chemicals, our range caters to diverse needs. Our knowledgeable technical engineers are always on hand to provide assistance.

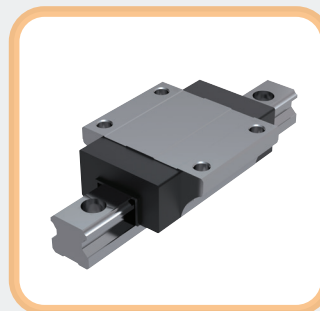
- Hardened steel rails from 15mm up to 55mm wide
- Aluminium linear rails up to 60% lighter than hardened steel rails
- Miniature rails from 3mm up to 42mm wide
- Needle roller linear rails for unrivalled stability



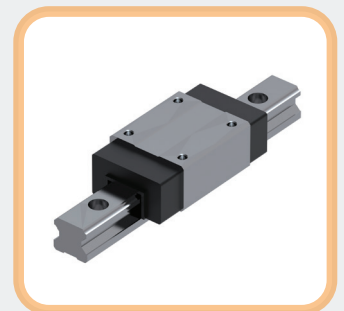
**MINIATURE  
RAILS**



**ALUMINIUM  
RAILS**



**NEEDLE  
ROLLERS**



**HARDENED  
STEEL RAILS**



TO VIEW  
**ONLINE**

# COMPACT & X-RAILS

Our Compact and X-Rail systems provide versatile solutions for linear guidance. Compact Rails are user-friendly in design, accommodating misalignment and allowing user-adjustable pre-load during installation. With induction-hardened raceways and a precision 'master' rail, it ensures high precision while minimising setup time and costs. Meanwhile, X-Rail, available in zinc-plated steel or corrosion-resistant stainless steel, offers a cost-effective option with a rolled-formed steel section, accommodating structural misalignment and providing durability for diverse applications.

- X-Rail materials: zinc plated steel, AISI 316 stainless steel
- Compact rail with hardened and ground raceways
- Rail widths 18mm up to 63mm, lengths up to 4080mm
- X-Rail low cost rail system widths 20mm up to 45mm, lengths up to 3120mm



**COMPACT  
RAILS**



**COMPACT  
SLIDERS**



**X-RAILS**



**X-RAIL  
SLIDERS**

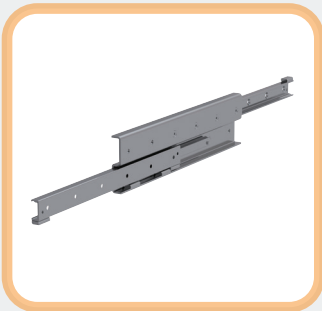


TO VIEW  
ONLINE

# TELESCOPIC SLIDES

Telescopic slides, also known as telescopic rails or drawer runners, are most commonly used in pairs. Primarily designed for sliding drawers, doors, and platforms, they find application in scenarios where linear movement is necessary, but standard linear guides are impractical due to length constraints. Whether facilitating horizontal or vertical linear travel, these telescopic slides offer a practical alternative, allowing for smooth and controlled motion without the need for extended guides spanning the entire travel length.

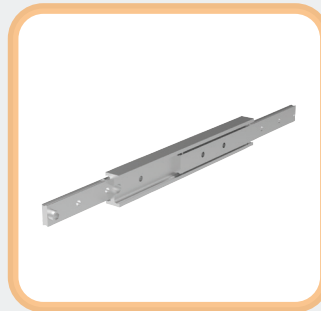
- Stainless steel slides made from AISI 316 stainless
- Drawer slide materials: cold-drawn steel, stainless steel
- Heavy duty telescopic slides maximum extension up to 3030mm
- Fully and partially telescopic heavy duty slides with high load capacities and very low deflection



**FULLY  
TELESCOPIC**



**PARTIALLY  
TELESCOPIC**



**ALUMINIUM  
TELESCOPIC**



**STAINLESS  
TELESCOPIC**



TO VIEW  
**ONLINE**

# CURVED RAILS

Curved rails are unique linear guides that offer a solution for applications where the equipment requires movement along curves, corners, or circular paths. With a minimum radius of 120mm, these rails can be precisely machined into full circles, fractional arcs, straight sections with bends in, or customised shapes according to specific requirements.

- Materials: steel, stainless steel, aluminium
- Rails can be hardened to expand life expectancy
- Rails sizes 16.5mm-23mm width
- Minimum radius 120mm
- Sliders preload can be manually adjusted to suit application



**STAINLESS  
STEEL**



**VARIABLE**



**CURVILINE  
SLIDERS**



**CONSTANT  
RADIUS**



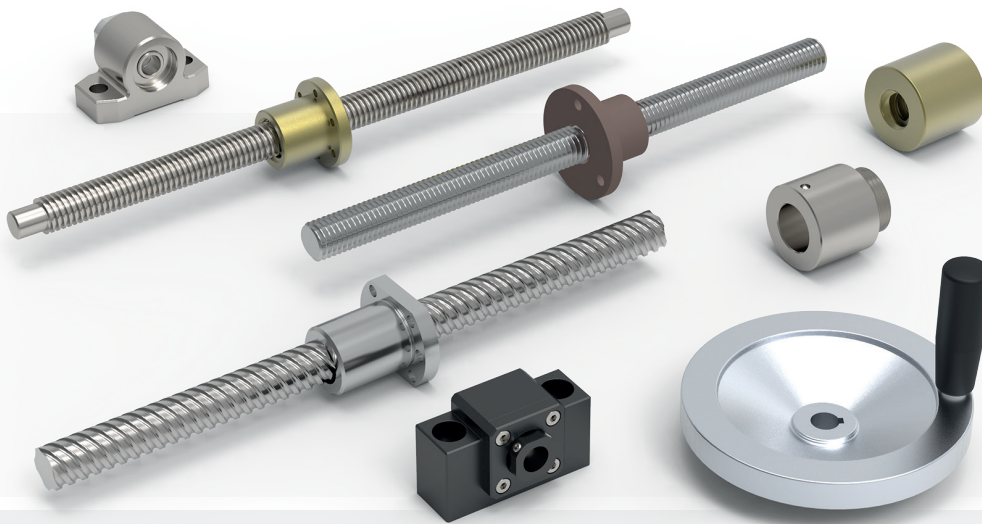


TO VIEW  
ONLINE

# LEAD & BALL SCREWS

Lead and ball screws, fundamental in translating rotary motion to linear movement, are commonly used in conjunction with parallel linear guides. Lead screws are typically used in applications where movements required are at low speed or with low accuracy. Also used in corrosive or dirty environments. Ball screws are used in applications that require movements at higher speeds and/or accuracy is an important specification.

- Lead screws materials: steel, AISI 316 stainless steel
- Lead screw size: Tr10x2 to Tr120x16
- Ball screw size: Tr6x1 to Tr80x10
- Black chrome anti-corrosion ball screws
- Accessories to suit such as handwheels and spindle locks



**TRAPEZOIDAL  
LEAD SCREWS**



**ROLLED THREAD  
BALL SCREWS**



**MINIATURE  
BALL SCREWS**



**ANTI-CORROSION  
BALL SCREWS**



TO VIEW  
**ONLINE**

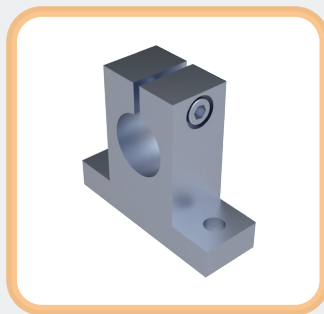
# LINEAR SHAFTS & BEARINGS

Linear shafts and bearings work together in supporting a piece of equipment moving in a linear fashion. Typically used in applications requiring low friction and lower loads than conventional linear guides. Our shafts and bearings are available in various materials and sizes. We can also manufacture, on short lead times, linear shafts to your drawing with custom machining, keyways, circlips grooves, drilled and tapped holes and more.

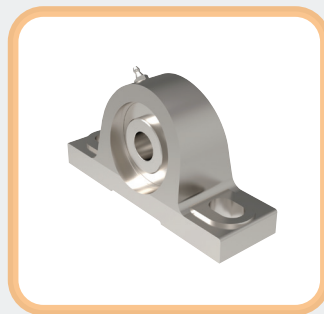
- Linear shafts materials: hardened steel, hardened corrosion resistant steel, 303 and 316 stainless, aluminium
- Linear ball bushing materials: steel, stainless steel
- Linear shafts: 5mm to 60mm in diameter and 6000mm in length
- Shaft support rails up to 80mm diameter, 6000mm in length
- A range of linear ceramic bearings



**LINEAR  
SHAFT BARS**



**LINEAR  
SHAFT SUPPORTS**



**BEARING  
MOUNTS**



**LINEAR  
BEARINGS**

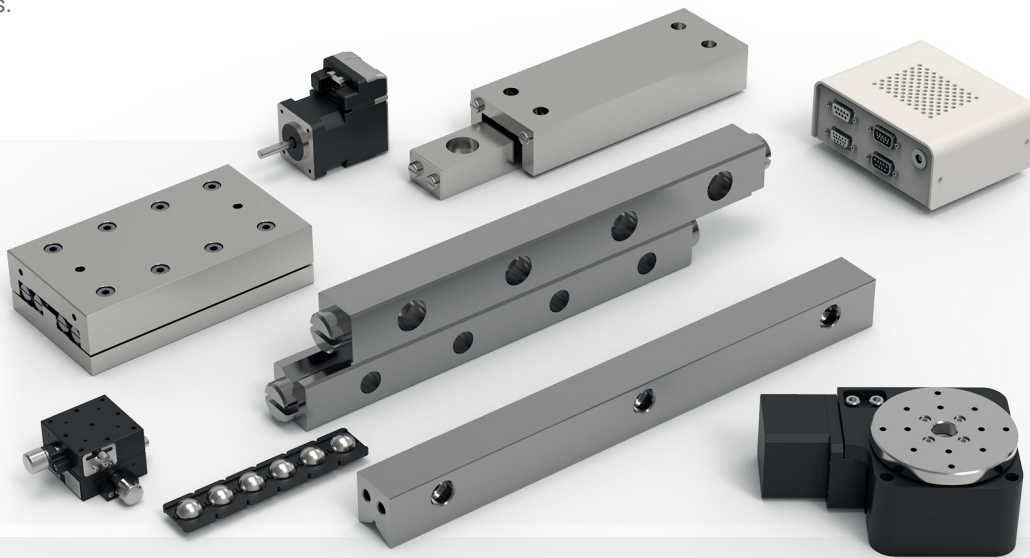


TO VIEW  
**ONLINE**

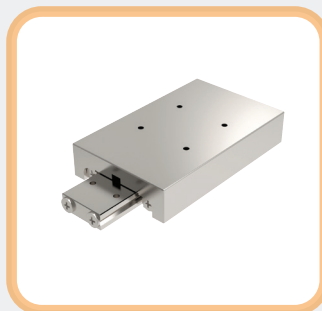
# CROSSED ROLLER RAILS & TABLES

Crossed roller rails and tables represent low-profile, high-precision solutions for linear support and guidance, ensuring elevated accuracy, repeatability, and minimal friction. Crossed roller tables, in particular, excel in handling higher loads compared to their ball bearing counterparts of similar dimensions. As specialists in linear motion systems, we offer you a choice of materials and sizes. Whether you need lightweight aluminium rails for use in aviation applications or stainless steel components for when exposure to water or corrosive chemicals is a factor, we have a range of options to a variety of requirements.

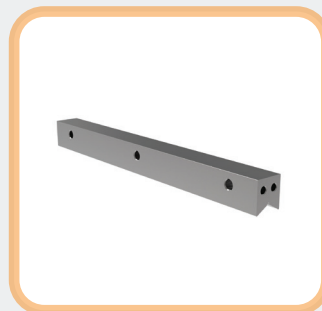
- Linear rail sets materials: hardened steel, stainless steel
- Linear tables materials: steel, aluminium, stainless steel, cast iron
- Linear rails from 4mm wide up to 28mm wide
- Linear tables with ball cages or crossed roller cages for increased load capacity



**STANDARD  
CROSS**



**LINEAR  
TABLES**



**NEEDLE  
ROLLER**



**ANTI-FRICTION  
COATED**

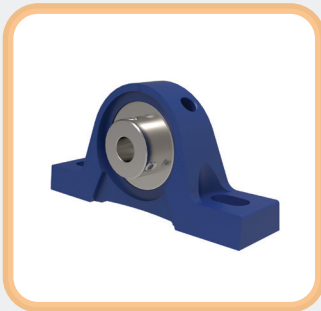
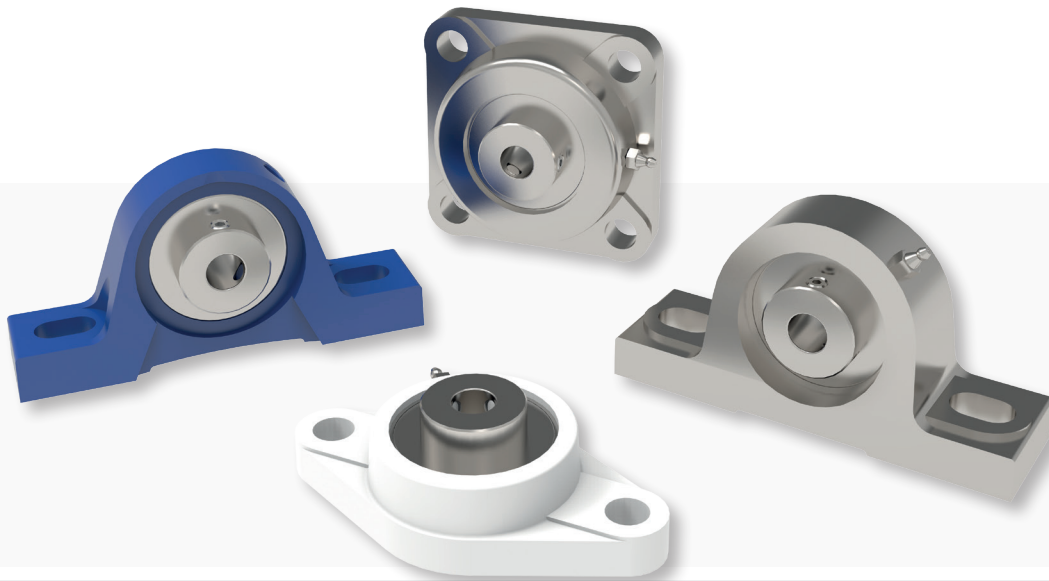


TO VIEW  
**ONLINE**

# PILLOW BLOCKS & BEARING SUPPORTS

Pillow blocks, also known as plummer blocks and bearing supports range in sizes from 12mm to 90mm inner diameter. These blocks house bearing inserts equipped with two set screws to secure the shaft in place after installation, providing stability and support. As specialists in linear motion systems, we offer a choice of materials and sizes to accommodate wet or chemical environments such as bottling lines, food or pharmaceutical production lines, outdoor applications and more.

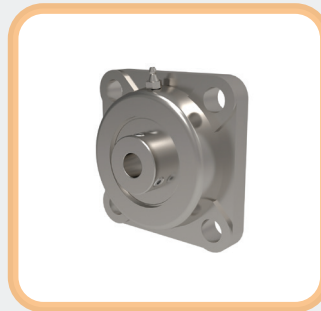
- Materials: cast iron, stainless steel, thermoplastic
- End machining of screws to suit supports available on request
- A wide range of housing options to suit any application
- Pillow block sizes from 12mm to 60mm
- Bearing supports cater for lead and ball screw diameters of 4mm-80mm



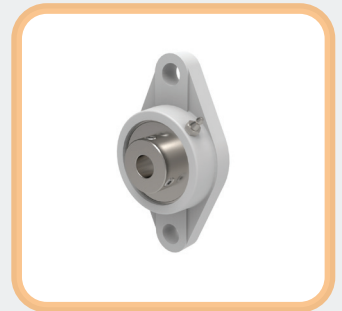
**PILLOW  
BLOCKS**



**BEARING  
SUPPORTS**



**FOUR POINT  
FLANGE**



**TWO POINT  
FLANGE**



TO VIEW  
**ONLINE**

# SHOULDER SCREWS

Shoulder screws, also known as shoulder bolts or sometimes referred to as stripper bolts, distinguish themselves by featuring a head, a threaded portion, and an additional unthreaded "shoulder" in between. This shoulder, with a larger diameter than the thread and high precision tolerance, serves a dual purpose as both a fastener and a precise guide for moving parts. Available in various materials, including stainless steel and titanium, shoulder screws offer versatility and reliability in applications requiring precise alignment and support for moving components.

- Materials: steel, 303, 316 and 416 stainless steel, titanium grades 2 and 5, blackened stainless
- Variety of head options such as: socket cap, torx drive cap head, countersunk, low head, hex head, pan head, socket button, torx button head
- Specials available to drawing on request



STEEL



STAINLESS  
STEEL



TITANIUM



BLACKENED  
STAINLESS



TO VIEW  
**ONLINE**

# CAPTIVE SCREWS

Captive screws, designed for permanent hold or “captivation,” offer enhanced safety by significantly reducing the likelihood of accidental removal once installed. The reduced diameter section of the screw helps keep the screw captivated in the panel once the panel has been removed, hence the name. This captivation is crucial for compliance with safety regulations, such as the EU Machine Safety Directive (2006/42/EC) and/or ISO 14583, where certain equipment, like safety covers or panels, require permanent fastenings.

- Materials: steel, 303 and 316 stainless steel, titanium grades 2 and 5, blackened stainless
- Variety of head options such as: socket cap, torx drive cap head, countersunk, low head, hex head, pan head, socket button, torx button head
- Specials available to drawing on request



STEEL



STAINLESS  
STEEL



TITANIUM



BLACKENED  
STAINLESS

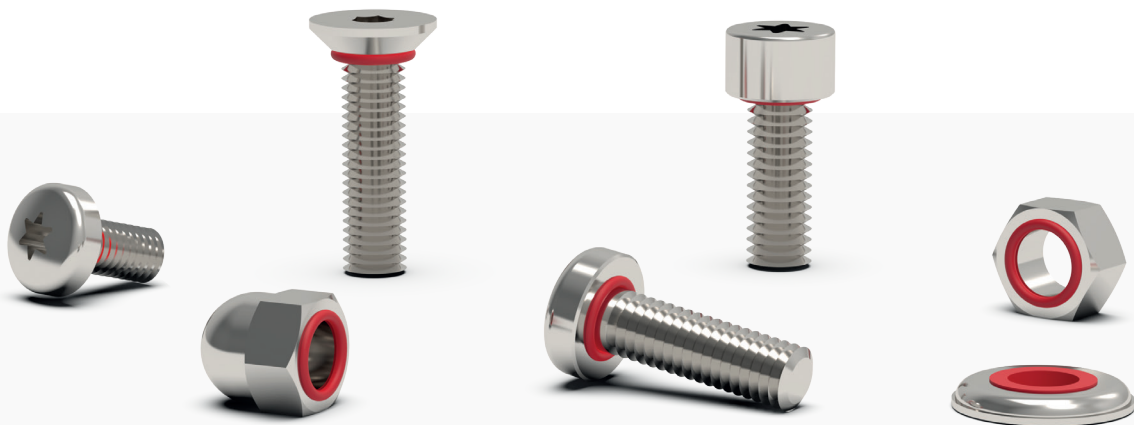


TO VIEW  
**ONLINE**

# SEALING SCREWS

Sealing screws offer crucial bi-directional protection against contaminants, preventing potential damage to sensitive devices. Featuring an O-ring beneath the screw or bolt, these screws create a reliable seal as they are tightened, controlled by a precision-engineered groove. This design ensures consistent O-ring compression, making the screws reusable. Various O-ring materials resist diverse chemical and environmental conditions. Sealing screws, available to military specifications (MILSPEC) on request, are user-friendly, requiring no special preparation or re-tightening.

- Materials: 303 and 316 stainless steel
- O-ring materials: silicone, fluorosilicone, EPDM, viton-fluorocarbon, nitrile
- Thread size varies between: M2–M20
- Variety of head options such as: torx or socket cap, countersunk, hex head, pan head, torx or socket button head



PAN HEAD



CAP HEAD



COUNTERSUNK



NUTS & WASHERS



TO VIEW  
**ONLINE**

# VENTED SCREWS

Vented screws are purpose-built for applications where trapped air bubbles pose challenges, such as in vacuum systems and clean rooms. The vent allows trapped air under the screw to be released quickly. Therefore, systems that are subjected to vacuum conditions can reach low pressures more quickly and remain at low pressures more effectively. To meet the cleanliness requirements of vacuum environments, ultrasonic cleaning and passivation (for AISI 316 stainless steel) are available on request. Additionally, coatings are offered to reduce seizing or galling in vented screws.

- Materials: 304 and 316 stainless steel
- Finishing options available
- Thread size varies between: M2-M16
- Variety of head options such as: socket cap, countersunk, hex head,, socket button head



HEX HEAD



CAP HEAD



COUNTERSUNK



SOCKET  
BUTTON HEAD





TO VIEW  
**ONLINE**

# LOW HEAD SCREWS

Low head screws, crucial in weight-sensitive applications like aerospace, provide minimal weight and reduced drag. Unlike traditional countersunk screws requiring a minimum metal depth for head recess, our innovative low head profile screws allow for the use of thinner panels, saving weight and ensuring a flush fit with the surface, with thicknesses as minimal as 0.5mm. Available in hex or TX versions, these screws provide a streamlined solution for applications requiring both lightweight design and reduced aerodynamic resistance.

- Materials: steel, stainless steel 303 and 316, titanium, blackened stainless
- Thread size varies between: M2-M10
- Ideal for use in panels too thin for countersunk screws or to reduce weight compared to standard cap head screws



STEEL



STAINLESS  
STEEL



BLACKENED  
STEEL



TITANIUM



TO VIEW  
**ONLINE**

# PINS & SPACERS

Pins and spacers are integral components in a range of applications, providing precise alignment and spacing for diverse needs. Complying with DIN/ISO standards, our collection includes pins and spacers in various materials such as steel, stainless steel (AISI 303 and 316) and more. Designed to meet specific requirements, we offer flexibility in dimensions and can manufacture special sizes on demand. Whether you need standardised options or custom solutions, our comprehensive range ensures reliability and adherence to industry standards.

- Dowel pin materials: steel, A2 and A4 stainless steel
- Hex pillars and spacers materials: zinc plated steel, stainless steel, nickel plated brass
- Dowel pins to DIN 6325, ISO 2338 and DIN 7
- Groove pins to DIN 1473



**DOWEL PINS**



**SPRING PINS**



**PILLARS**



**SPACERS**



TO VIEW  
**ONLINE**

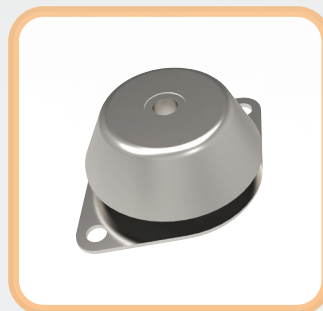
# ANTI-VIBRATION

Anti-vibration products are essential in minimising the impact of vibrations on machinery and equipment, ensuring stable and efficient operation and reducing noise. Our comprehensive range adheres to industry standards and includes various solutions such as mounts, feet, pads, and bushes. Available in different materials and sizes, these products are designed to absorb and dampen vibrations, providing enhanced stability in diverse applications.

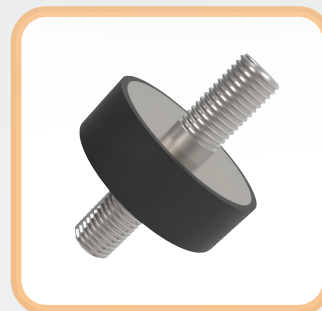
- Cylinders material: steel, stainless steel
- Levelling feet materials: steel, stainless
- Buffers and cones materials: steel
- Machine mounts materials: steel, stainless steel
- Ceiling and acoustic hangers: steel
- Spring mounts with options between 1 and 6 springs



FEET



MOUNTS



CYLINDERS



HANGERS

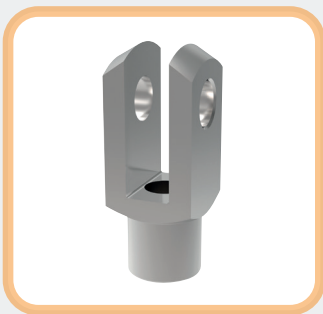


TO VIEW  
**ONLINE**

# CLEVIS JOINTS

A Clevis joint is a type of coupling where the mating component fits between the forks and is held in place via a clevis pin. Made to DIN 71752 and also known as a fork end or yoke, they are commonly used as a coupling on the end of air cylinders or at either end of a turnbuckle or wire rope for tensioning. As these are specialist parts, don't hesitate to get in touch with our technical engineers who can help with calculations and choose the right products for your application.

- Clevis joint materials: steel, stainless steel
- Clevis retention clips provide a neat, compact solution now available in stainless steel
- Size: M4-M48
- Clevis pins with holes for cotter pins or groove for circlips or safety fasteners
- Safety fasteners can be installed without need for tools



**CLEVIS JOINTS**



**CLEVIS MATING PIECES**



**CLEVIS PINS**



**CLEVIS CLIPS**



TO VIEW  
**ONLINE**

# ROD ENDS

Rod ends, also known as heim joints or rose joints, are articulating joints used on the ends of control and tie rods, offering precision and robust load-bearing capabilities. It comprises a spherical bearing located in a housing with either a male or female thread to enable easy installation. A connecting bolt or shaft is located through the spherical bearing which allows for some angular misalignment. Ideal for applications where standard clevis or ball joints may lack precision, our rod ends ensure versatility and reliability.

- Materials: steel, stainless steel
- Rod ends available in right and left hand thread
- K series rod ends from M5 to M30
- E series rod ends from M5 to M48
- E series rod ends fit neatly between forks of clevis with same thread size



**MALE  
ROD ENDS**



**FEMALE  
ROD ENDS**



**HYDRAULIC  
ROD ENDS**



**HEAVY DUTY  
ROD ENDS**



TO VIEW  
**ONLINE**

# BALL & SOCKET JOINTS

Ball and socket joints, commonly a 90° joint, facilitate movement and rotation in various directions as a partial ball turns within a socket. Manufactured to DIN 71802 standards, our extensive stock includes right-angled, in-line, lockable, and quick-release ball and socket joints. Available in steel or stainless steel and with rubber gaitors to protect against dirt. With such a wide range of options we are sure to have the right joint for your application.

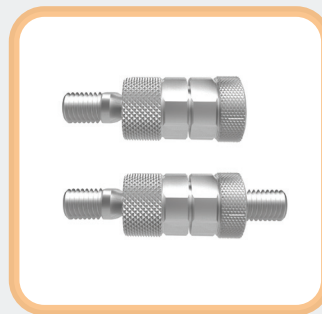
- A range DIN 71802 ball and socket joints now available in A4 stainless
- Size: M5-M16
- Options with rubber sealing cap to prevent dirt ingress
- Threaded ball studs
- Ball joint housings



**BALL & SOCKET**



**AXIAL BALL & SOCKET**



**LOCKABLE**



**THREADED BALL STUD**



TO VIEW  
ONLINE

# UNIVERSAL JOINTS

A universal joint is a solid coupling enabling the connection of two rotating shafts. These joints feature bearings allowing the transmission of torque and rotary motion between non-aligned shafts, with a maximum operational bending angle per bearing of 45 degrees. Available in steel and stainless steel, with protective bellows against dirt ingress, our extensive range includes plain and needle roller bearing variants, pre-bored or unbored options, single and double universal joints, as well as telescopic variants in steel and stainless steel.

- Materials: steel, stainless steel
- Plain bearings for speeds up to 1000rpm
- Needle roller bearings for speeds up to 4000rpm
- Technical graphs and formulae to help select required size
- Specials available on request



SINGLE



DOUBLE



TELESCOPIC



BELLOWS



TO VIEW  
**ONLINE**

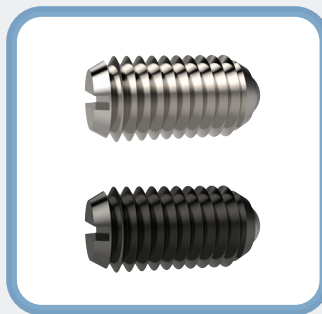
# SPRING PLUNGERS

Spring plungers are discreet mechanical devices for securing, positioning, indexing, positively locking, and applying lift-off pressure. Consisting of three components—a ball or pin contact point, a spring with varying force, and a small grub screw-like housing. Housings are typically from steel, stainless steel (commonly AISI 303 and 306, with other types available), brass, or plastic. Featuring ball bearing steel balls or pin heads, they are available in threads as small as M2 up to M24, including UNC and UNF inch sizes. They also come as smooth body push-fit models for quick and easy installation.

- Materials: steel, stainless steel, brass, thermoplastic
- Ball materials: steel, stainless, plastic, ceramic
- Size: 2-22mmØ, M2-24
- Slotted or hex drive
- Smooth body plungers are press fit
- Light, standard, and heavy spring forces



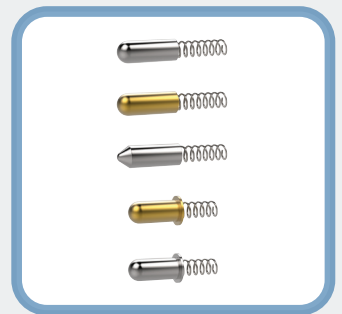
**SMOOTH  
BODY**



**THREADED  
WITH BALL**



**EXPANDER  
FIT**



**SPRING  
BODIES**





TO VIEW  
**ONLINE**

# INDEX PLUNGERS

An index plunger is a mechanical device featuring a retractable pin that automatically expands when space is available, effectively locking or indexing an item into place. Index plungers can be used to ease the positioning of removable parts on machines, equipment assemblies and to help locate the correct component. Available with a variety of different grips and locking functions to suit different applications.

- Materials: steel with plastic grip, stainless steel with plastic grip, stainless body and grip
- Diameter size: M6 – M24, 4-12mmØ pin
- Options with thread but no head for you to install custom head design
- Red push button release lock option
- Standard, compact and thin wall



**PULL RING**



**T HANDLE**



**LEVER GRIP**



**THREADED MOUNTING**



TO VIEW  
**ONLINE**

# BALL LOCK PINS

A ball lock pin, also known as a quick release or self-locking pin, is a fastener designed for swift locking of workpieces. Inserted through a clearance fit hole, the sprung-loaded balls extend into a recess, effectively securing the pin. Quick release ball lock pins, available in steel, stainless steel, and titanium, offer rapid, reliable fastening. Ideal for applications in audio and light rigging, gym equipment, scientific and medical fields, pop-up installations, displays and various engineering applications.

- Materials: stainless steel 303, precipitation hardened 630 stainless
- Pin diameter: 5-25mmØ
- Grip lengths: 10mm–150mm
- Lanyards and retaining cables
- Clamping pins and threaded quick release pins also available
- Aviation pip pins are imperial, manufactured and certified to EN9100D by EASE



**T HANDLE**



**MUSHROOM  
HANDLE**



**DETENT PINS**



**AVIATION  
PIP PINS**



TO VIEW  
**ONLINE**

# GRIPS & HANDLES

Grips and handles come in a wide array of shapes, sizes, threads, and fixing options. Our selection of screw-in hand grips and knobs are suitable for various applications, including cabinetry and machinery doors. Crafted from durable materials such as plastic with steel or stainless steel threads, these components ensure reliability and longevity. Whether it's a finger pull handle or a spring-loaded recessed handle, or anything in between, we have a variety of solutions.

- Grips materials: iron, plastic coated, aluminium, stainless steel, steel, duroplast, thermoplast
- Pull handles materials: aluminium, plastic coated, steel, stainless steel, thermoplastic, polyamide
- Clamping levers materials: thermoplastic, zinc, stainless steel, steel, brass, iron, technopolymer
- Cranked and revolving handles materials: iron, stainless steel, steel, thermoplastic, duroplast



**PALM GRIPS**



**PULL HANDLES**



**TRUNK HANDLES**



**CLAMPING LEVERS**

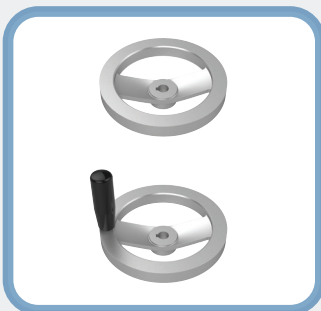


TO VIEW  
**ONLINE**

# HANDWHEELS

Handwheels are devices often used in industrial engineering, particularly for manual adjustments such as opening valves in heavy machinery applications. Therefore, handwheels must be very durable and reliable in these scenarios. We offer handwheels crafted from the highest quality materials, adhering to DIN standards, such as plastic, cast iron, steel and stainless steel handwheels. Available with or without keyways and fold-away handles.

- Materials: stainless steel, aluminium, duroplast, thermoplastic, cast iron, zinc plated steel hub
- Sizes: 80-400mmØ
- A range of handwheels available with fold away rotating handles



2 SPOKE



3 SPOKE



DISC TYPE  
(WITHOUT GRIP)



DISC TYPE  
(WITH GRIP)

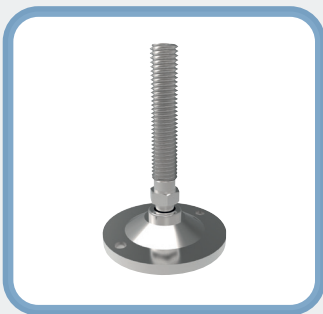


TO VIEW  
**ONLINE**

# LEVELLING FEET

Levelling feet are height adjustable supports for equipment or machinery. Adjustable levelling feet have varying degrees of articulation providing angular adjustment, whilst the use of hex nuts up the threaded stud provide height adjustment. Fixed levelling feet provide a basic support that doesn't require any angular adjustments. Available in steel and stainless bases for more heavy-duty applications and more economical plastic base for lighter-duty applications.

- Materials: steel, stainless steel, plastic base with either steel or stainless thread
- Rubber protective base options
- Sizes: M6–M36
- Base diameters 25mm–150mm
- Bolt down options



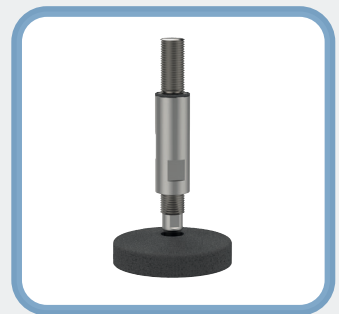
**ARTICULATING  
FEET**



**FIXED FEET**



**MINI FEET**



**HYGIENIC  
FEET**



TO VIEW  
**ONLINE**

# LOCATING, POSITIONING & GRIPPING

Our comprehensive range for locating, positioning, and gripping products optimise precision across industrial applications. Featuring versatile locating pins, including full and diamond-shaped options, these facilitate accurate positioning of plates and subplates. Self-aligning pads and thrust screws simplify clamping, supporting, and aligning non-parallel surfaces, with choices for diverse materials and finishes. Grippers, equipped with various tooth patterns, enhance handling capabilities in machining operations, tailored to specific application requirements.

- Thrust screws and locating pins materials: steel, stainless steel
- Steel, stainless or plastic round ball and flat faced ends
- Grippers materials: solid carbide, steel, hard metal, stainless steel, urethane coated
- Side thrust pins with or without seal. Light, standard or heavy spring load



**THRUST  
SCREWS**



**SELF ALIGNING  
PADS**



**LOCATING  
PINS**



**SENSING  
ELEMENTS**



TO VIEW  
**ONLINE**

# LIFTING RINGS & QUICK LIFT PINS

Lifting rings and quick lift pins are essential tools for heavy lifting, efficiently hoisting and repositioning heavy loads. They easily secure in place, providing reliable support during lifting operations. Their user-friendly design outperform traditional options in installation and removal speed, reliability and durability. Ideal for routine hoisting in warehouses and construction sites where regular lifting is required.

- Eye bolts materials: steel, stainless steel
- Single, double and triple swivel lifting rings materials: steel, 316 stainless steel
- Loads up to 35 tonnes for one ring
- Quick release lift pins from 8mm-20mmØ
- Quick release threaded lift pins from M10-M24
- Lifting rings come with certification



**SWIVEL  
LIFTING PINS**



**QUICK LIFT PINS -  
BALL LOCKING**



**QUICK LIFT PINS -  
THREADED**



**EYE BOLTS**



TO VIEW  
**ONLINE**

# LOCKS & LATCHES

Offering security and reliability on enclosures, our range of locks cater to various industrial needs. With options including cylinder locks, T and L-handles, mini locks, and snap-on locks, we provide versatile solutions for secure enclosure and cabinet fastening, machine access panels and tool lockers. The locks are easy to install and are made with precision, meeting industry standards to ensure durability and optimal performance.

- Cam latches and locks materials: steel, stainless steel, plastic
- Cam locks with keyed alike or keyed to differ keys
- Cam latches with insert driver such as square, triangle, slotted
- Compression latches to reduce vibration
- Handle and lever latches for easier operating



**CAM LATCHES**



**COMPRESSION LATCHES**



**CAM LOCKS (T HANDLE)**



**LEVER LATCHES**





TO VIEW  
**ONLINE**

# HINGES & DAMPERS

Meeting diverse industrial requirements, our selection of hinges and dampers enhance the controlled movement of small lids, drawers, panels and covers in many applications. From standard hinges for secure door attachment to adjustable friction hinges for controlled motion, our range ensures reliable performance. Dampers are also available to control the speed of motion and prevent sudden movements.

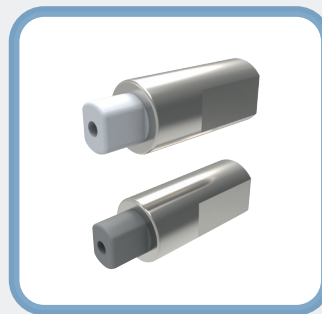
- Surface mount hinges
- Piano hinges
- Corner hinges
- Glass door hinges
- Lift off hinges
- Concealed hinges
- Torque, positioning, and friction hinges
- Torque, disk and rotary dampers



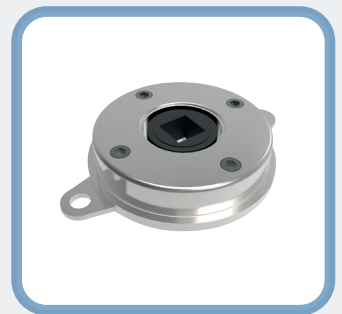
**EXTERNAL  
HINGES**



**FRICTION  
HINGES**



**TORQUE  
DAMPERS**



**DISK  
DAMPERS**

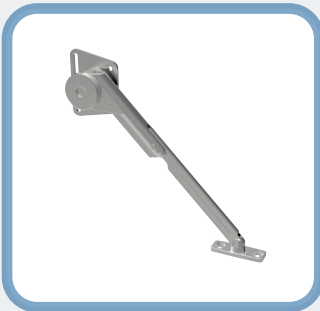


TO VIEW  
**ONLINE**

# STAYS

Our door stays and restrictors are designed to securely hold lids and doors in an open position. Additionally, we provide a diverse selection of stays to effectively control closure, including soft-close stays and spring-loaded stays. We have options for lightweight, medium or heavy-duty applications. With various colours and materials available, you can choose the stays that best suit your specific application for reliable and controlled movement.

- Door stays materials: steel or stainless with or without release wire
- Soft down stays and lid stays in downward or upward opening options



**SOFT DOWN**



**SPRING  
LOADED**



**LID STAYS**



**DOOR STAYS**

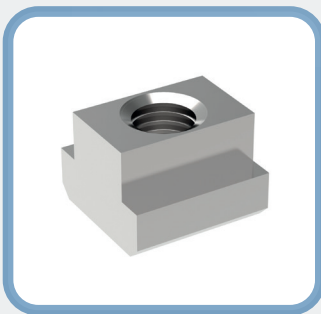
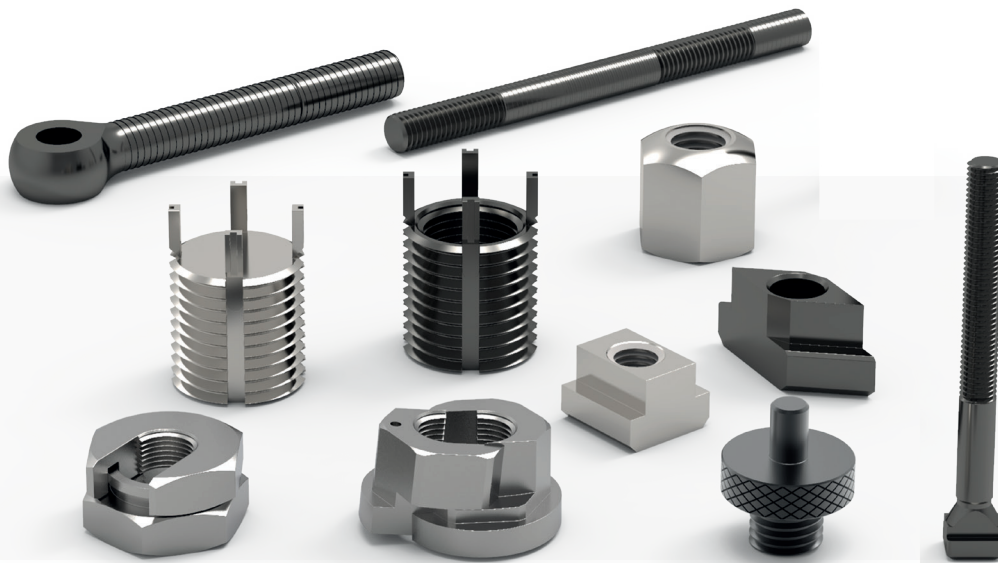


TO VIEW  
**ONLINE**

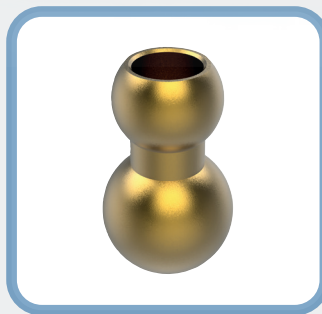
# FIXING ELEMENTS

Our assortment of fixing elements encompasses a diverse array of components designed for various applications. Whether you need reliable fasteners, connectors, or specialised fixtures, our range offers versatility in sizes and materials including threaded inserts, T nuts-bolts, fixture coolant nozzles and more. Whatever your project demands, our comprehensive selection ensures you find the right fixing elements for your specific needs.

- T-nuts and t-bolts: steel, stainless steel
- Coolant nozzles materials: brass, acetal, aluminium, stainless steel, copper
- Swing bolts: steel, stainless steel
- Set collars: steel, stainless steel
- Nuts and washers: steel, stainless steel
- Slip on lock nuts M8-M24



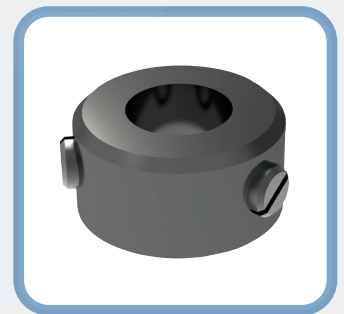
**T-NUTS**



**COOLANT  
NOZZLES**



**SWING BOLTS**



**SET COLLARS**

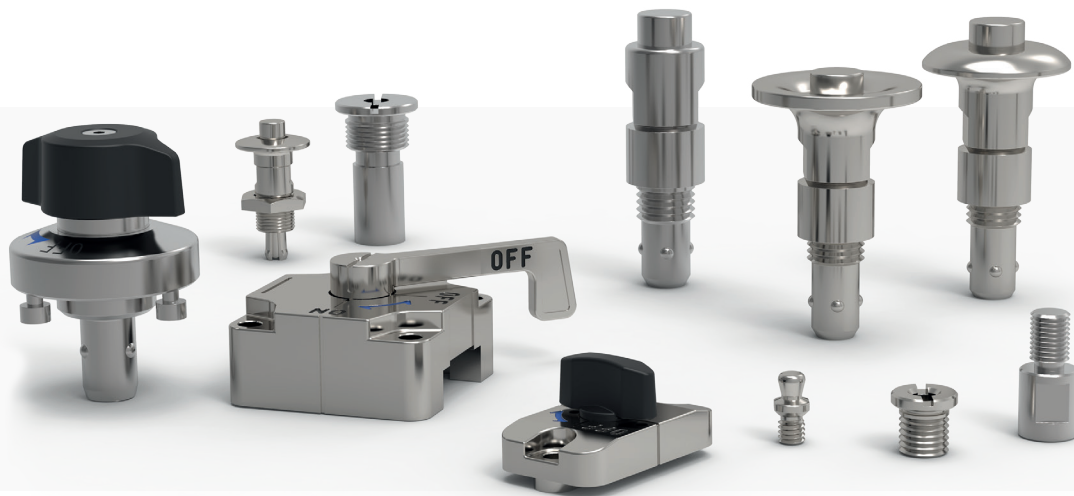


TO VIEW  
**ONLINE**

# ONE TOUCH FASTENERS

One-touch fasteners are handy tools for quickly changing equipment in tasks like bottling or adjusting machines. They come in different types, such as push button, quarter-turn, ball clamping, quarter-turn cam, and magnetic locking. These fasteners work well with panels and enclosures that are 6mm to 32mm thick. They are available in materials such as stainless steel, steel, and die-cast zinc. They're reliable tools to make your work easier and more efficient when you need to switch things around in various industrial settings.

- Quarter turn t-handle materials: plastic, steel, stainless steel
- Ball locking and ball clamping with push button release or quarter turn t-handle release
- Magnetic option providing 7N clamping force
- Sliding clamps with visible on/off indicator providing up to 800N static load



**BALL  
LOCKING**



**BALL  
CLAMPING**



**MAGNETIC**



**SLIDING  
CLAMPS**



TO VIEW  
**ONLINE**

# MANUAL CLAMPING

Within our extensive manual clamping product range, we provide tailored solutions to accommodate diverse industrial needs. Our offerings include low-profile clamping for efficient use in confined spaces, adjustable vertical clamps offering versatility, standard manual clamping for reliable and straightforward applications, heavy-duty side clamping to meet robust requirements, chain clamping for secure and flexible fastening, and bore and shaft clamping options.

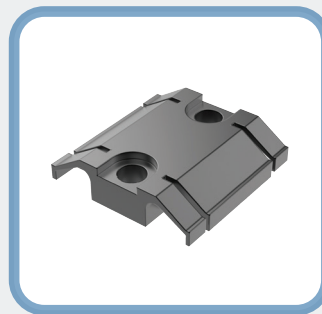
- Pitbull clamps
- Talongrip clamps
- Eccentric clamps
- Uniforce clamps
- Fixture clamps
- Low profile side clamps
- T-slot clamps
- Hook and pull clamps
- ID expansion clamps



**LOW PROFILE**



**ADJUSTABLE  
CLAMPS**



**HEAVY DUTY**



**CHAIN  
CLAMPING**



TO VIEW  
**ONLINE**

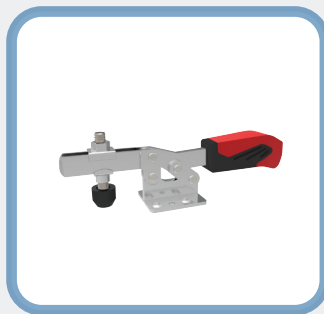
# TOGGLE CLAMPS

Offering versatility and minimal maintenance, our broad range of toggle clamps finds applications across various industrial and commercial settings. Especially effective in welding production, these clamps enhance quality and reduce production time. Toggle clamps also prove valuable for conveyors, machine tool positioners, tension-free tapering, and handling narrow rails. Available in steel or stainless steel, our toggle clamps include vertical-acting, side-acting, push-pull, latch-type clamps, pneumatic options, and more.

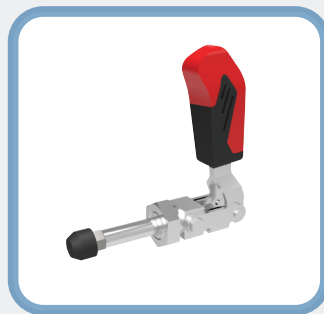
- Standard or economy
- Safety lever
- Latch type
- Hook
- Optical measuring
- ESD (electrostatic dissipative)
- Auto-adjust
- Pneumatic
- Heavy duty



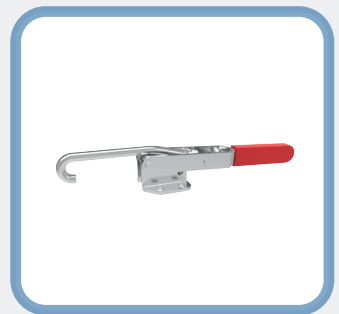
**VERTICAL**



**HORIZONTAL**



**PUSH PULL  
TYPE**



**HOOK TYPE**

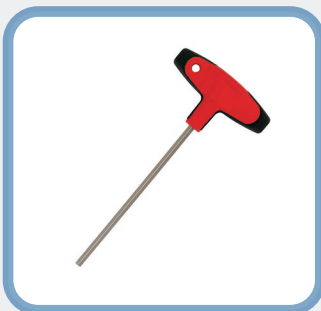


TO VIEW  
**ONLINE**

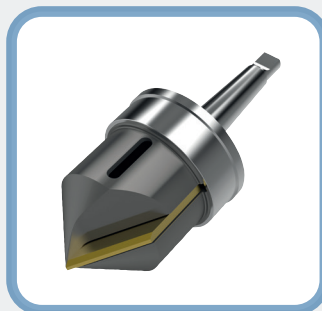
# HAND TOOLS

Our industrial hand tools are designed to meet DIN compliance, providing machine operators with essential tools for many tasks. The range includes hook wrenches, pin-faced spanners, simplex and non-rebound mallets. Additionally, our chamfering tools, compatible with standard chucks, ensure accurate and consistent chamfering of both internal and external surfaces in finished parts.

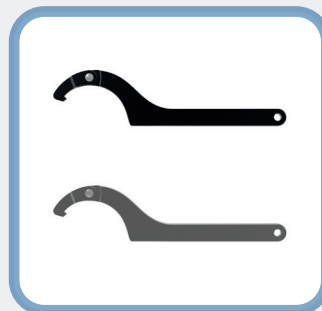
- Hex keys and wrenches
- Chamfering tools
- Spanners and hook spanners
- Mallets and hammers
- Chip hooks



**HEXAGON  
KEYS**



**CHAMFERING  
TOOLS**



**SPANNERS**



**MALLETS**

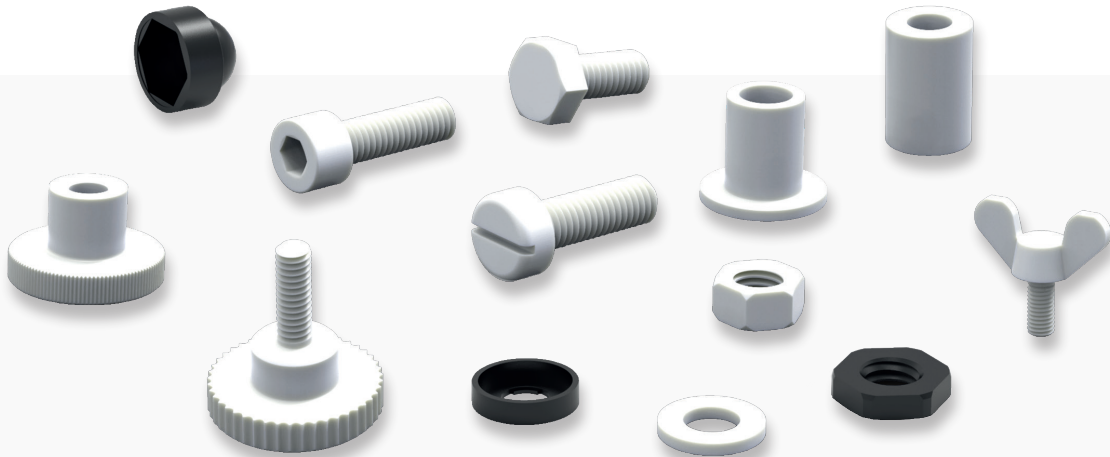


TO VIEW  
**ONLINE**

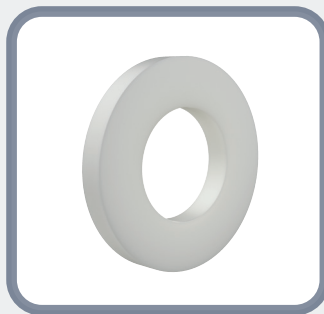
# NYLON FASTENERS

Nylon fasteners, including screws, nuts, washers, spacers, and nut covers, leverage the unique properties of this hygroscopic material. Affected by moisture, nylon acts as a plasticiser, enhancing properties such as elongation, impact strength, and energy absorption while reducing tensile strength and stiffness. With excellent wear properties, a low coefficient of friction, and remarkable chemical resistance, particularly against aromatic hydrocarbons, greases, and oils, nylon fasteners offer durability and versatility in service, performing well up to temperatures of 85°C.

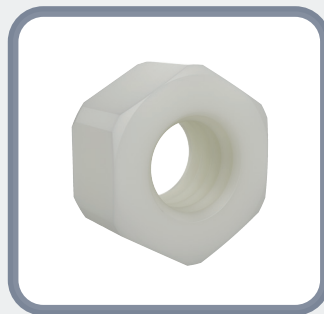
- Nylon socket cap screw M3-M12
- Nylon hex head bolt M2-M16
- Flat point nylon set screws M4-M24
- Nylon machine screws including pan head, countersunk, mushroom and raised heads



SCREWS



WASHERS



NUTS



SPACERS



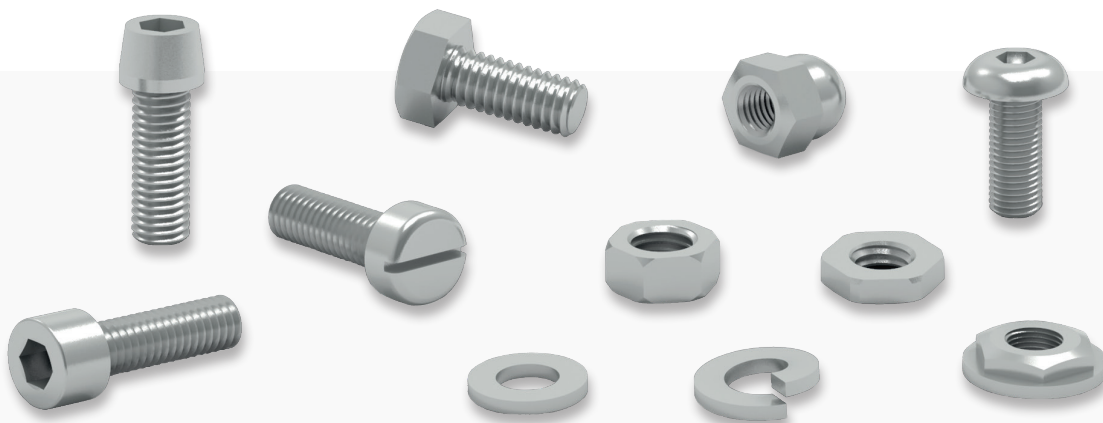


TO VIEW  
**ONLINE**

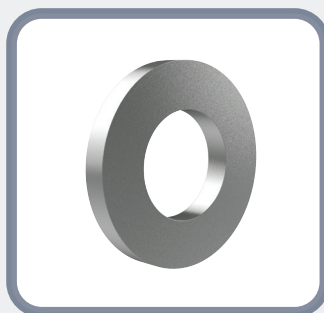
# ALUMINIUM & TITANIUM FASTENERS

Our selection of aluminium and titanium fasteners come in different grades for various uses. Titanium fasteners are available in pure titanium grade 2 Ti and alloyed titanium grade 5. These options provide reliability and suitability for specific industrial needs, whether you need lightweight and corrosion-resistant aluminium fasteners or the excellent strength-to-weight ratio of titanium fasteners.

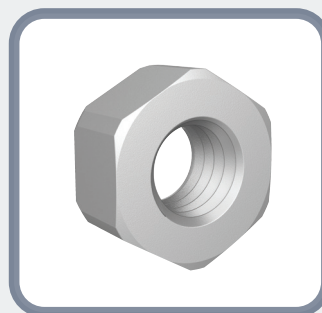
- Aluminium fasteners in 7075 Ali
- Aluminium nuts and washers in 6061 or 7075 Ali
- Titanium fasteners in grade 2 and grade 5
- Titanium nuts and washers in grade 2 or 5



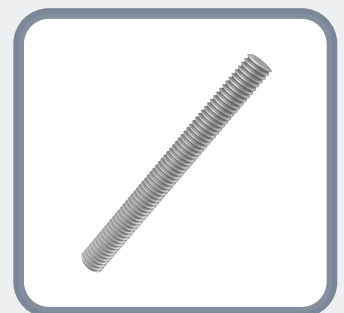
**SCREWS**



**WASHERS**



**NUTS**



**STUDDING**



TO VIEW  
**ONLINE**

# THREADED INSERTS

Threaded inserts are inserted into objects to add a threaded hole. They provide durable threaded holes, ideal for soft materials, or for transitioning between unified and metric threads. Predominantly used to repair damaged threads and enhance parent material strength, our threaded inserts feature a locking key design. Easy to install and remove, we offer standard options for commercial or military grade use, manufactured in steel or stainless steel, with floating thin-walled versions also available.

- Materials: steel, stainless steel
- Military grades
- Installation tools
- Metric and imperial
- Locking and non locking



**STAINLESS  
STEEL**



**STEEL**



**INSTALLATION  
TOOLS**



**MILITARY  
GRADE**

# WE ARE The Wixroyd Group family

Our **three companies** each specialise in specific products and services designed to meet the needs of Design & Project Engineers, Mechanical Engineers, Product Engineers and those in production.

Across our brands we offer an **extensive website** showcasing a large range of products, supported by **great stock availability, detailed product datasheets, application examples, free CAD downloads and easily accessible live chat, email and phone support** at your fingertips, should you need any technical advice. Each brand has a different product offering, please see below for an overview of which brand may be more suited to you.

## ▶ DESIGN ELEMENTS

Our range of standard parts from spring plungers to lifting pins.

## ▶ ACCESS COMPONENTS

A broad range of components enhancing access applications.

## ▶ WORKHOLDING

From fixing elements to clamping systems and base plates we have an extensive range of workholding solutions.



scan to visit our website



**Wixroyd**<sup>®</sup>  
AN ESSENTRA COMPANY

## ▶ MECHANICAL COMPONENTS

A huge variety of mechanical components with a large range of fasteners made in-house at our Chichester site.

## ▶ LINEAR COMPONENTS

A leading supplier of linear with an extensive range available.

## ▶ LINKAGES & ROTARY COMPONENTS

From universal joints & rod ends to gears and clevis joints.



scan to visit our website



**Automation**<sup>®</sup>  
AN ESSENTRA COMPANY

## ▶ THREAD INSERTS

A broad range of thread inserts to suit any application.

## ▶ SCREWS & WASHERS

Screws & washers available in a large range of materials from nylon and polypropylene to stainless steel, brass and titanium.

## ▶ QUICK RELEASE PINS

From T-handle to spring loaded pull pins and lanyards.



scan to visit our website



**Teknipart**<sup>®</sup>  
AN ESSENTRA COMPANY



wixroyd.group | 0333 207 4497 | sales@wixroyd.com



**Wixroyd**<sup>®</sup>  
**group**  
AN ESSENTRA COMPANY

wixroyd.group



**Wixroyd**

wixroyd.com | 0333 207 4497



**Automation Components**

automationcomponents.co.uk | 0333 207 4498



**Teknipart**

teknipart.co.uk | 0333 207 9969

Wixroyd Group Ltd, Alexia House, Glenmore Business Park,  
Portfield Works, Chichester, PO19 7BJ (UK)

To opt out of the Wixroyd Group database please email [marketing@wixroydgroup.com](mailto:marketing@wixroydgroup.com)

Grp\_P\_1044



Follow us  
@WixroydGroup